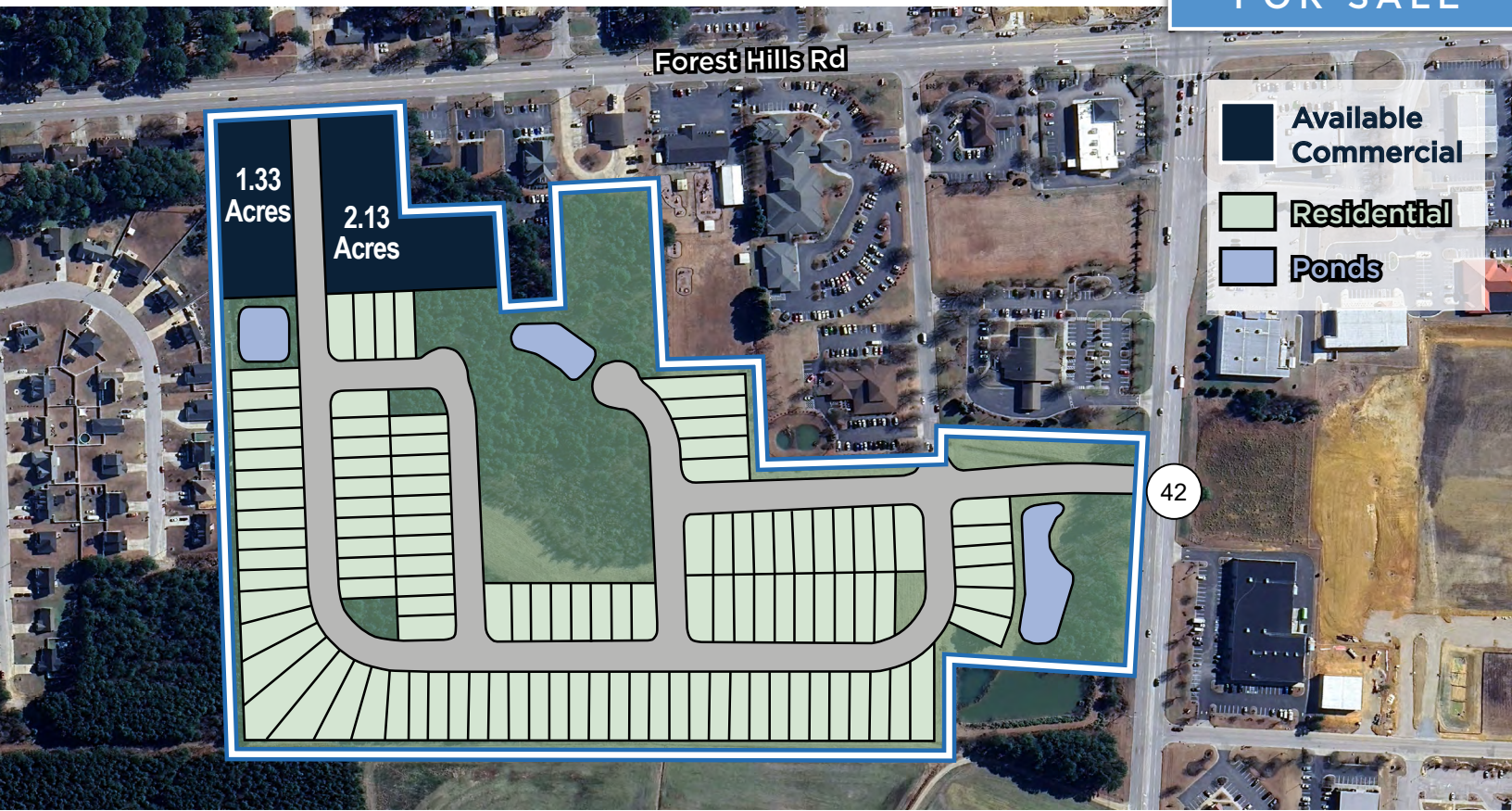


LUKE'S CHAPEL

Wilson, NC 27893

FOR SALE



Two Prime Commercial Real Estate Parcels Available

HIGHLIGHTS

- Two prime commercial parcels available
- Great location in the heart of Wilson on Forest Hills Rd near Hwy 42
- Rough graded with utilities to perimeter
- Delivery: 1st half of 2027
- Pricing: Lot A (1.33 Acres) \$665,000
Lot B (2.13 Acres) \$1,065,000
- Traffic on Forest Hills Rd is 21,500 AADT



Bryce Davis

919.400.0451

bdavis@mcg-cre.com

Gregg Marks

919.971.2066

gmarks@mcg-cre.com

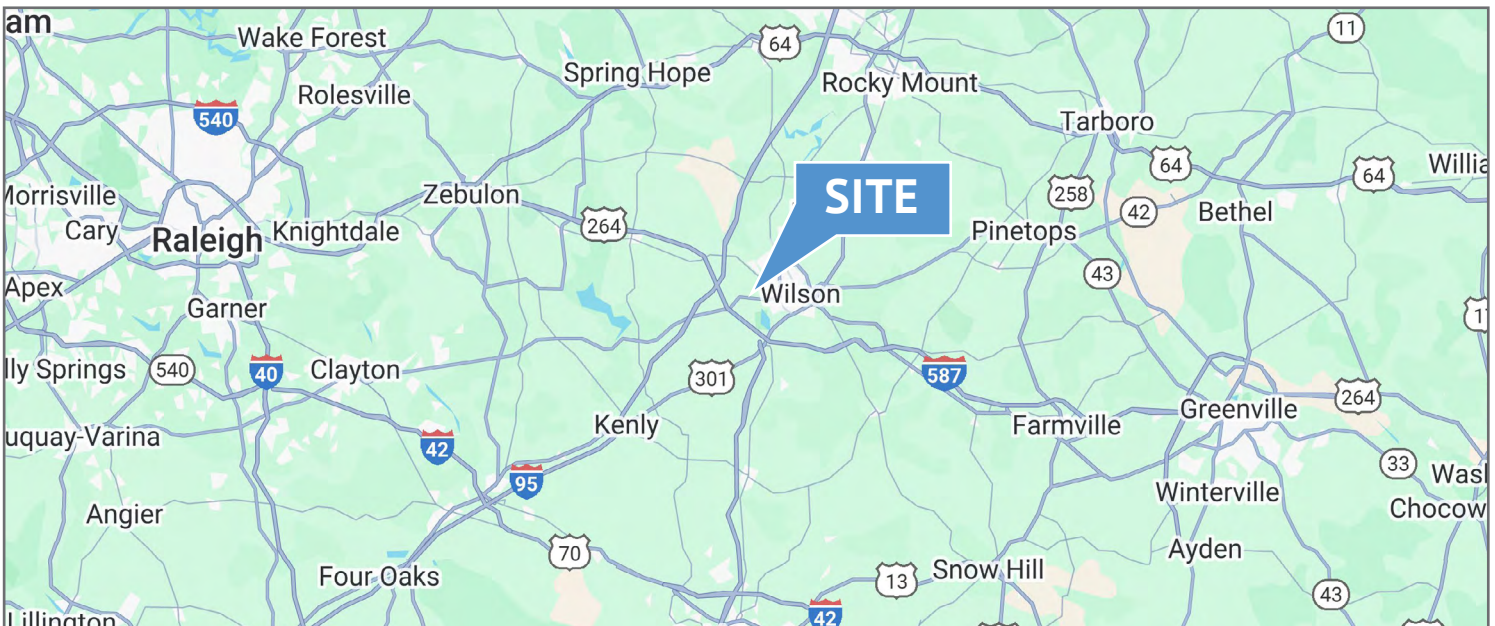


LUKE'S CHAPEL

Wilson, NC 27893

FOR SALE

LOCATION OVERVIEW



Bryce Davis

919.400.0451

bdavis@mcg-cre.com

Gregg Marks

919.971.2066

gmarks@mcg-cre.com



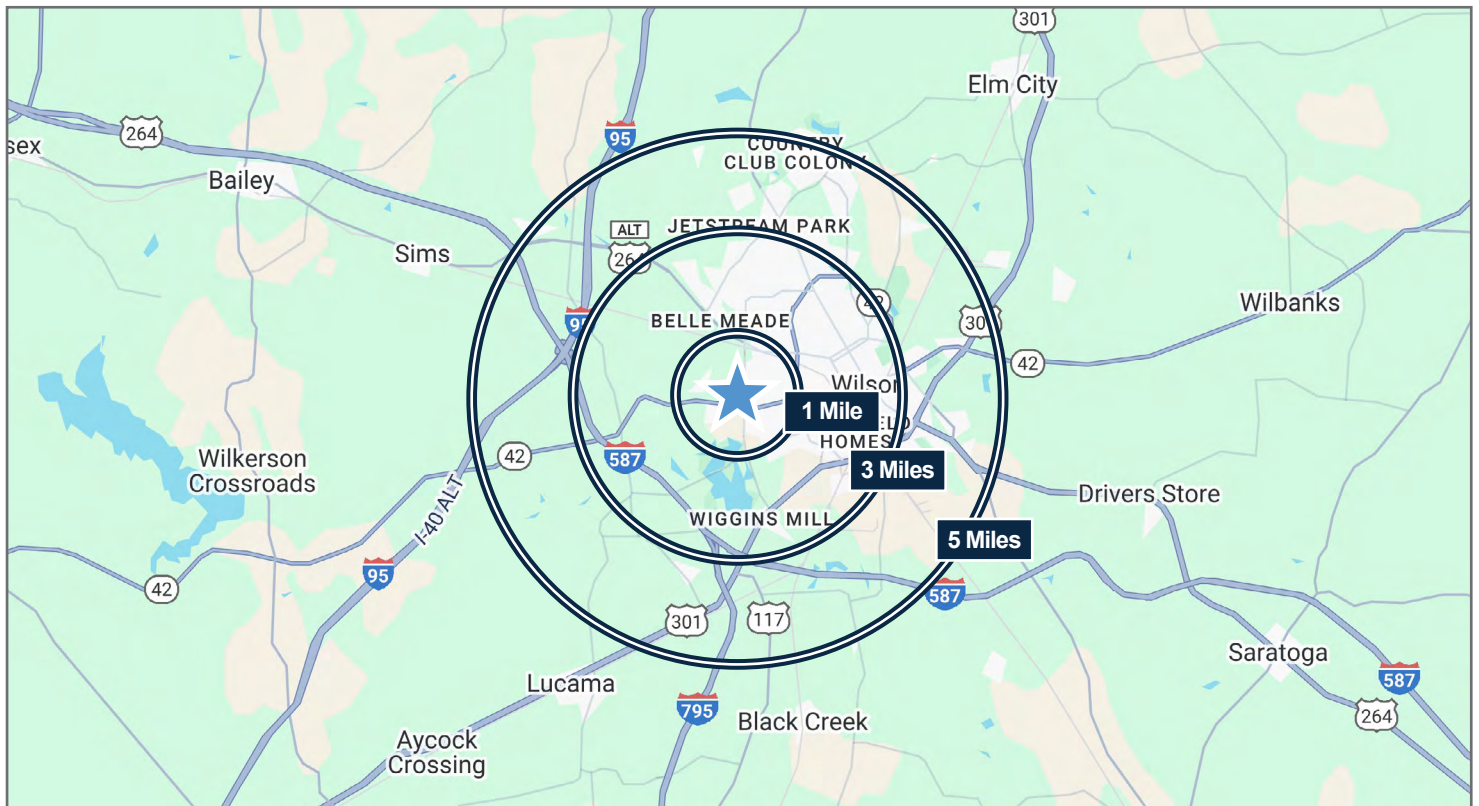
LUKE'S CHAPEL

Wilson, NC 27893

FOR SALE

DEMOGRAPHICS

	<u>1 MILE</u>	<u>3 MILES</u>	<u>5 MILES</u>
2024 Population	4,700	33,600	52,400
2029 Population	4,700	33,800	55,200
Daytime Employment	7,100	24,700	34,700
2024 Households	2,100	14,100	22,800
2029 Households	2,100	13,200	22,900
Median Home Value	\$133,600	\$149,000	\$153,100
2024 Average HH Income	\$65,700	\$60,400	\$61,300
2024 Median HH Income	\$52,000	\$47,000	\$47,800



Bryce Davis

919.400.0451

bdavis@mcg-cre.com

Gregg Marks

919.971.2066

gmarks@mcg-cre.com

