

VILLAGE GATE AT KNIGHTSDALE

2890 Smithfield Road • Knightsdale, NC 27545

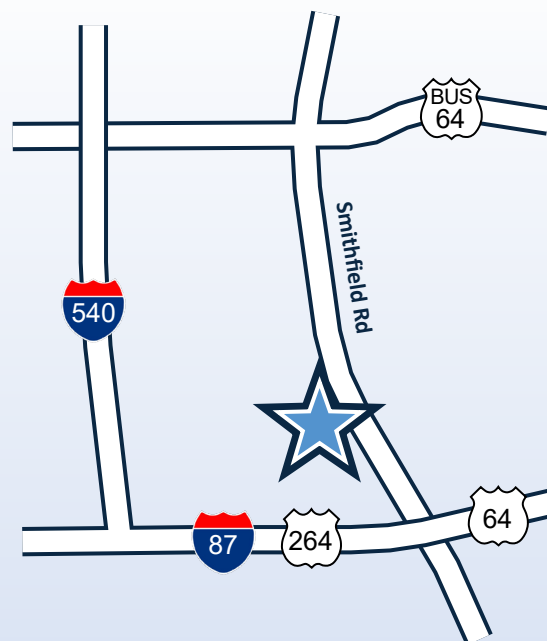
FOR LEASE



Preleasing Office & Retail in Knightsdale, North Carolina

HIGHLIGHTS

- Available: 7,225 SF (Building 6) & 7,226 SF (Building 7)
- Mixed-use Development Project
 - 388 Apartments
 - 76 Single Family
 - 65 Townhomes
- Small town feel with a southern charm.
- Connected to established sought out Glen Manor neighborhood!
- Excellent location of busy Hwy I-87.
- **Lease Rate: \$31.00 / SF NNN**



Gregg Marks

919.971.2066

gmarks@mcg-cre.com

Laura Saleh

919.368.0594

lsaleh@mcg-cre.com



VILLAGE GATE AT KNIGHTSDALE

2890 Smithfield Road • Knightsdale, NC 27545

FOR LEASE

PROPERTY INFORMATION

Available:	7,225 SF & 7,226 SF	Rental Rate:	\$31.00 / SF NNN
Property Type:	Mixed-Use	TICAM:	\$8.00
Parking:	735 Spaces	Lease Term:	7-10 Years



Gregg Marks

919.971.2066

gmarks@mcg-cre.com

Laura Saleh

919.368.0594

lsaleh@mcg-cre.com

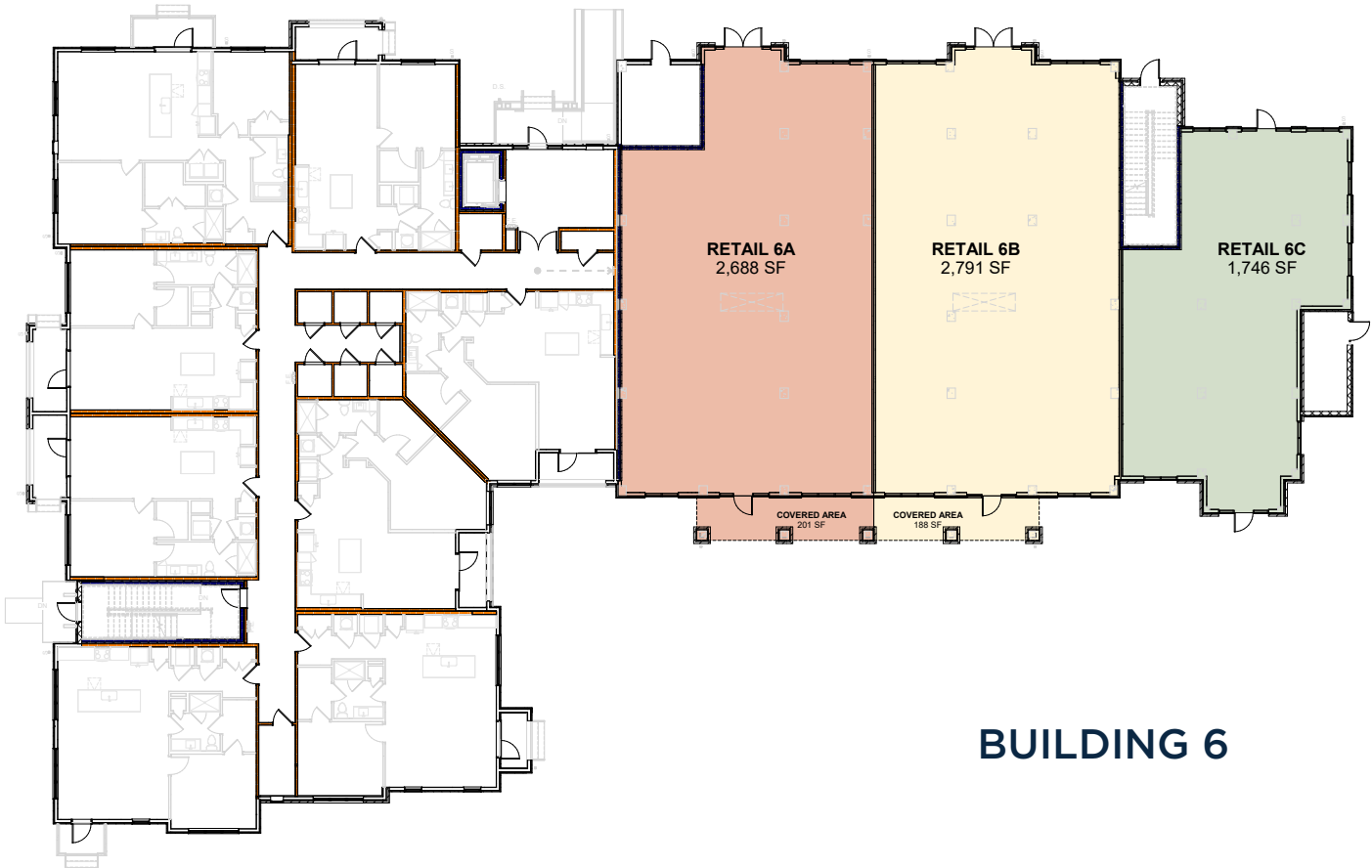


VILLAGE GATE AT KNIGHTSDALE

2890 Smithfield Road • Knightsdale, NC 27545

FOR LEASE

FLOOR PLAN



BUILDING 6

Gregg Marks

919.971.2066

gmarks@mcg-cre.com

Laura Saleh

919.368.0594

lsaleh@mcg-cre.com



VILLAGE GATE AT KNIGHTSDALE

2890 Smithfield Road • Knightsdale, NC 27545

FOR LEASE

FLOOR PLAN



BUILDING 7

Gregg Marks

919.971.2066

gmarks@mcg-cre.com

Laura Saleh

919.368.0594

lsaleh@mcg-cre.com



VILLAGE GATE AT KNIGHTSDALE

2890 Smithfield Road • Knightsdale, NC 27545

FOR LEASE

RENDERINGS



Gregg Marks

919.971.2066

gmarks@mcg-cre.com

Laura Saleh

919.368.0594

lsaleh@mcg-cre.com



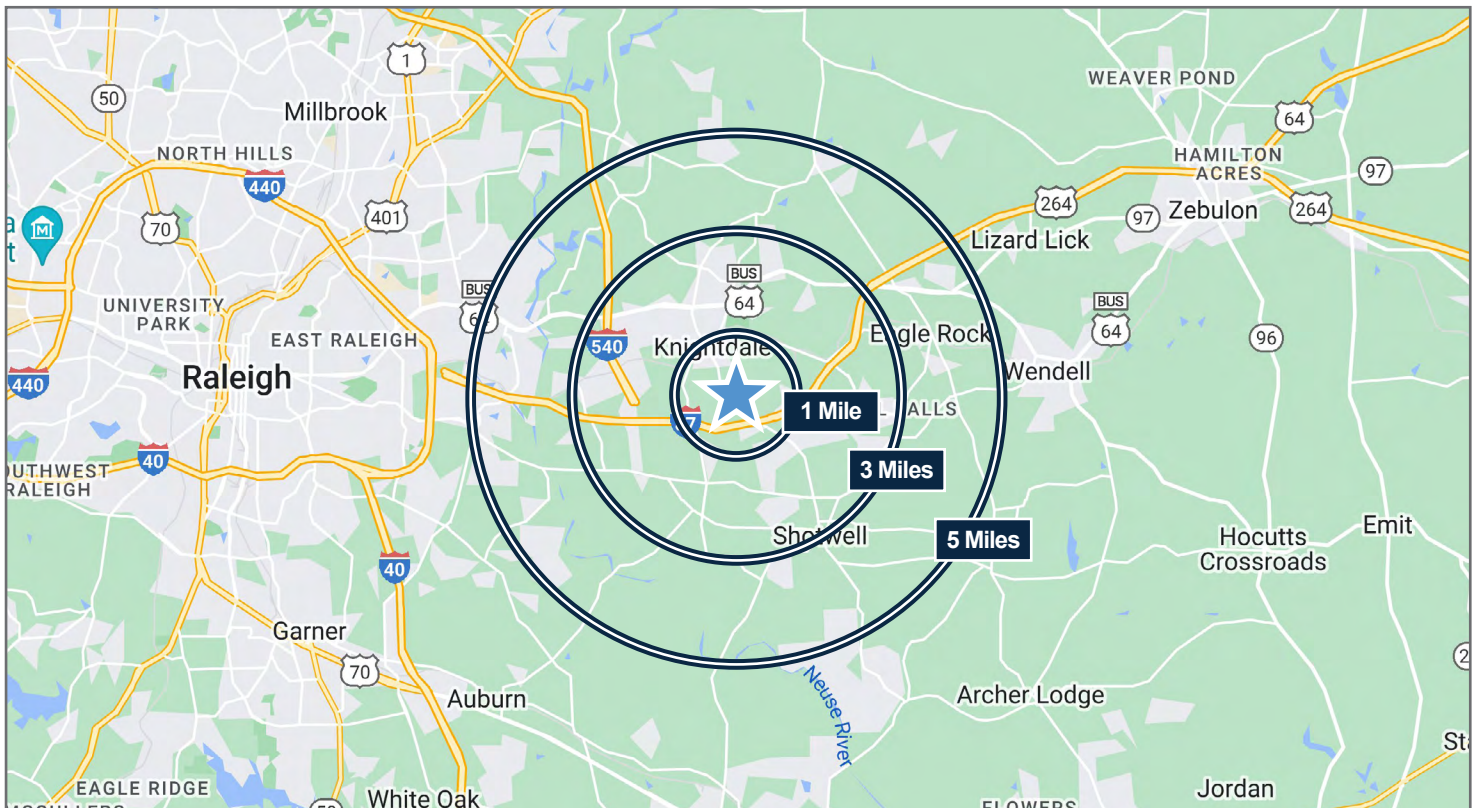
VILLAGE GATE AT KNIGHTSDALE

2890 Smithfield Road • Knightsdale, NC 27545

FOR LEASE

DEMOGRAPHICS

	<u>1 MILE</u>	<u>3 MILES</u>	<u>5 MILES</u>
2022 Population	2,252	32,771	70,877
2027 Population	2,465	35,102	75,771
Annual Pop Growth (2022-2023)	1.82%	1.69%	1.34%
2022 Households	809	12,046	25,772
2027 Households	882	12,912	27,566
Avg HH Size	2.78	2.71	2.74
2022 Median Age	37.2	35.7	35.7
2022 Average HH Income	\$69,439	\$92,948	\$93,817
2022 Median Home Value	\$247,590	\$263,786	\$255,835



Gregg Marks

919.971.2066

gmarks@mcg-cre.com

Laura Saleh

919.368.0594

lsaleh@mcg-cre.com

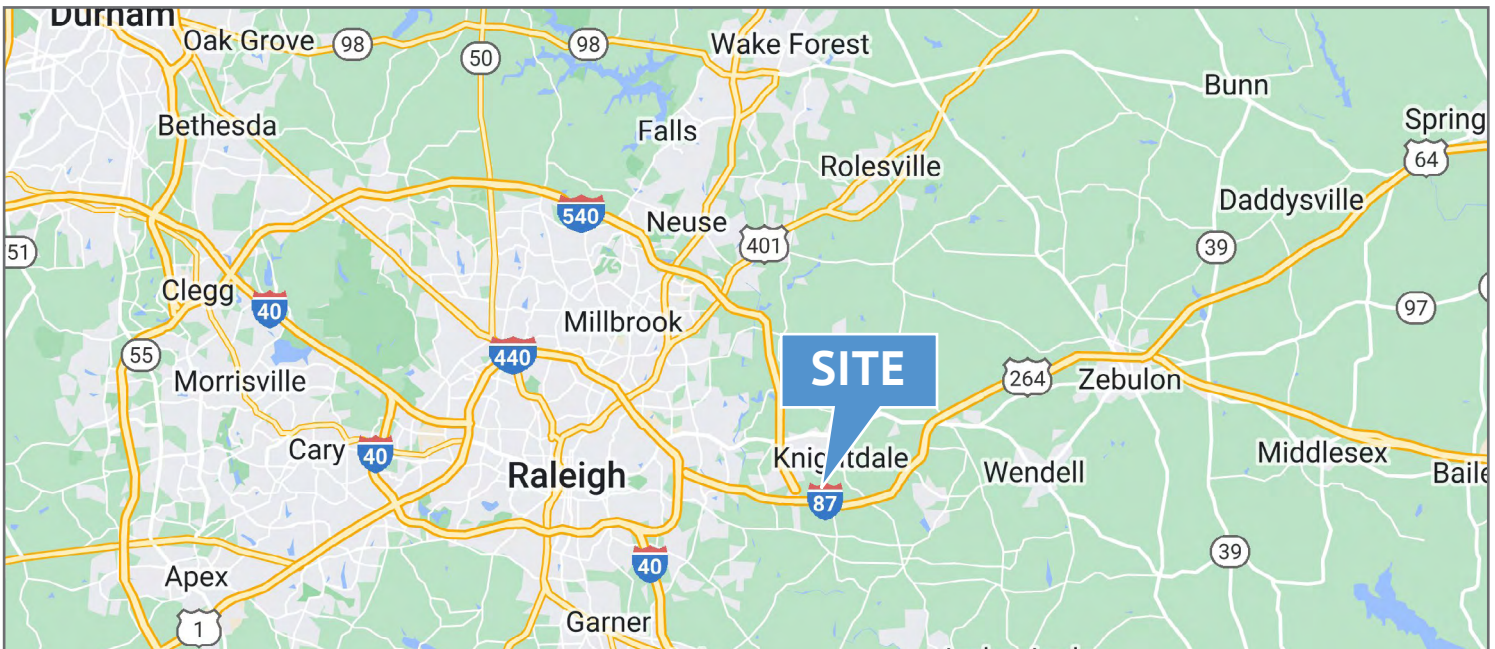
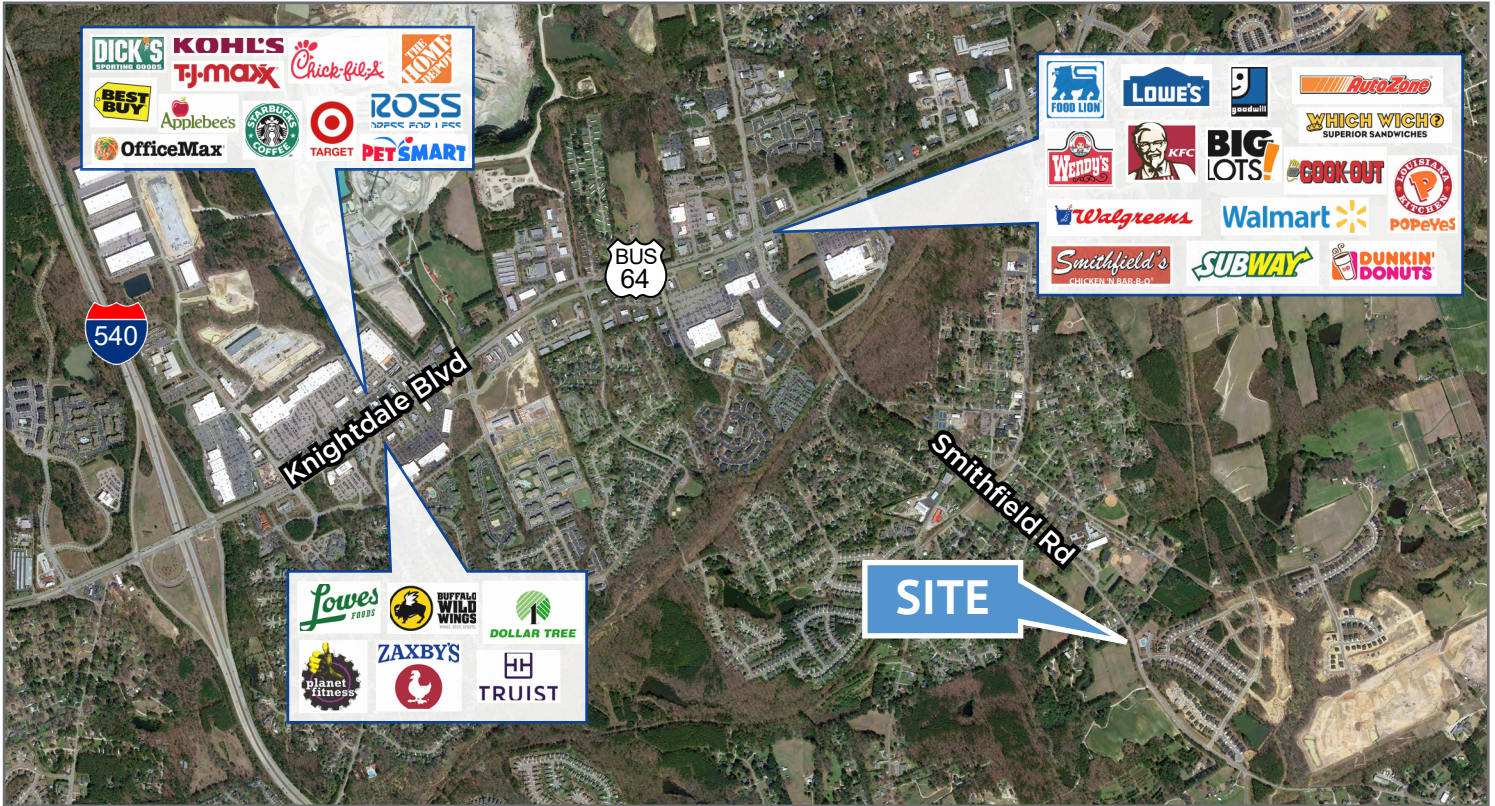


VILLAGE GATE AT KNIGHTSDALE

2890 Smithfield Road • Knightsdale, NC 27545

FOR LEASE

LOCATION OVERVIEW



Gregg Marks

919.971.2066

gmarks@mcg-cre.com

Laura Saleh

919.368.0594

lsaleh@mcg-cre.com

